

FDMP20401

2.0 TO 10.0 GHz: INPUT
4.0 TO 20.0 GHz: OUTPUT
FREQUENCY DOUBLER

Typical Values	FDMP20401
Input Frequency	2.0 - 10.0 GHz
Output Frequency	4.0 - 20.0 GHz
Conversion Loss	10.5 dB
Input Drive (nominal)	+10.0 dBm
High Fundamental Suppression	40.0 dBc
Seam Sealed Hermetic Cougar MixerPak Package	

SPECIFICATIONS*

Parameter	Port	Frequency (GHz)	Guaranteed -55 to +85 °C				
			Typ. (dB)	Max. (dB)			
SSB Conversion Loss and SSB Noise Figure	f _{IN}	3.0 to 8.0	10.0	11.5			
	f _{OUT}	6.0 to 16.0	10.0	11.5			
Suppression [^]	f _{IN}	2.0 to 10.0	10.5	12.0			
		4.0 to 20.0	10.5	12.0			
Fundamental	f _{IN}	2.0 to 10.0	Typ. (dB)	Min. (dB)			
			32	25			
			Third Harmonics	f _{IN}	2.0 to 4.0	50	40
				f _{IN}	4.0 to 8.0	38	28
				f _{IN}	8.0 to 10.0	45	32
Fifth Harmonics	f _{IN}	2.0 to 10.0	50	40			

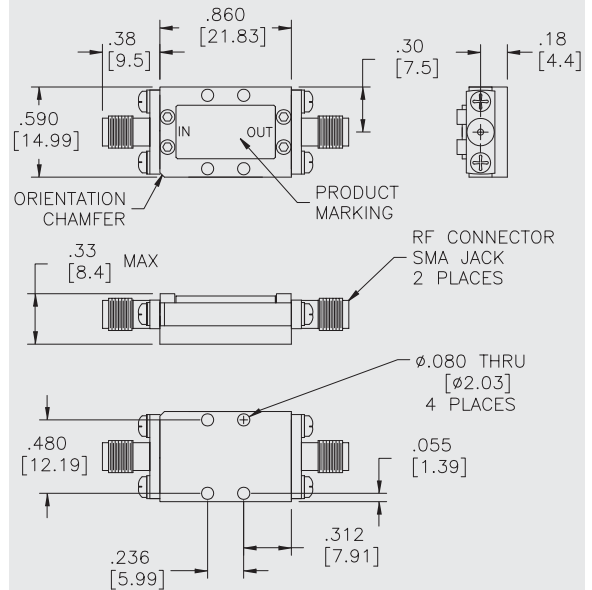
* Measured in a 50-ohm system with nominal Input drive of +10 dBm.
[^] Fundamental and harmonic suppression is referenced to the fundamental input.

ABSOLUTE MAXIMUM RATINGS

Storage Temperature	-65 to +125 °C
Peak Input Power	+23 dBm @ 25 °C
	derate to +17 dBm @ 100 °C
Peak Input Current @ 25°C	50 mA DC

FDMP20401

Cougar MixerPak for Frequency Doubler



DIMENSIONS ARE IN INCHES [MILLIMETERS]

TYPICAL PERFORMANCE

KEY: +25 °C —
+85 °C - - -
-55 °C - - -

